

## Load VMWare and Configure Device for eCOS Access

1. Download the **VMWare Viewer** Application:



### When connecting to the internet with an iPad:

Use your **iPAD** to access the Apple Store and follow instructions to download the **VMWare View** app:



### When connecting to the Internet with a Laptop/PC using Windows or MAC Book

Enter <https://view.bethesdahealthcare.com> in your internet browser and follow instructions to Download **VMWare View Client** (accept all defaults)



*\* You will need to restart your PC to save changes.*

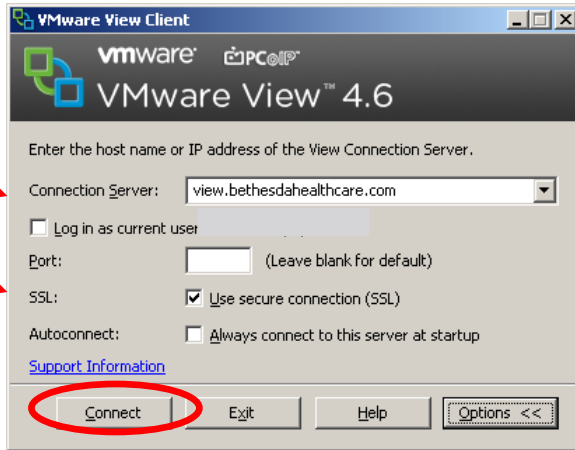
2. When the **VMWare Viewer** install is complete you will see a new icon on your desktop "**VMWare View Client**":



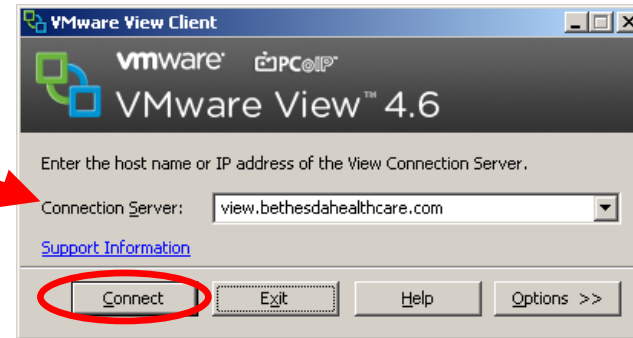
3. Double-click on the **VMWare Viewer icon** on your desktop to Configure VMWare and click **Connect**:



**iPAD Configuration**



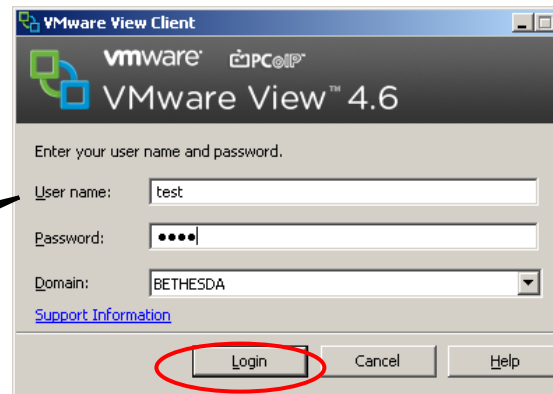
**Laptop/PC using Windows or MAC Book Configuration**



\* Your device should remember these settings after you enter them the first time

4. You will *always* have to enter your **BHS Network Username and Password** – this is the same login used for Citrix.  
 5. VMWare Viewer will to enter your **eCOS Password** to use prepare the desktop and open the eCOS application. You will need **User ID and eCOS**.

Enter **BHS Network** User ID and Password!



Enter **eCOS** User ID and Password!

