

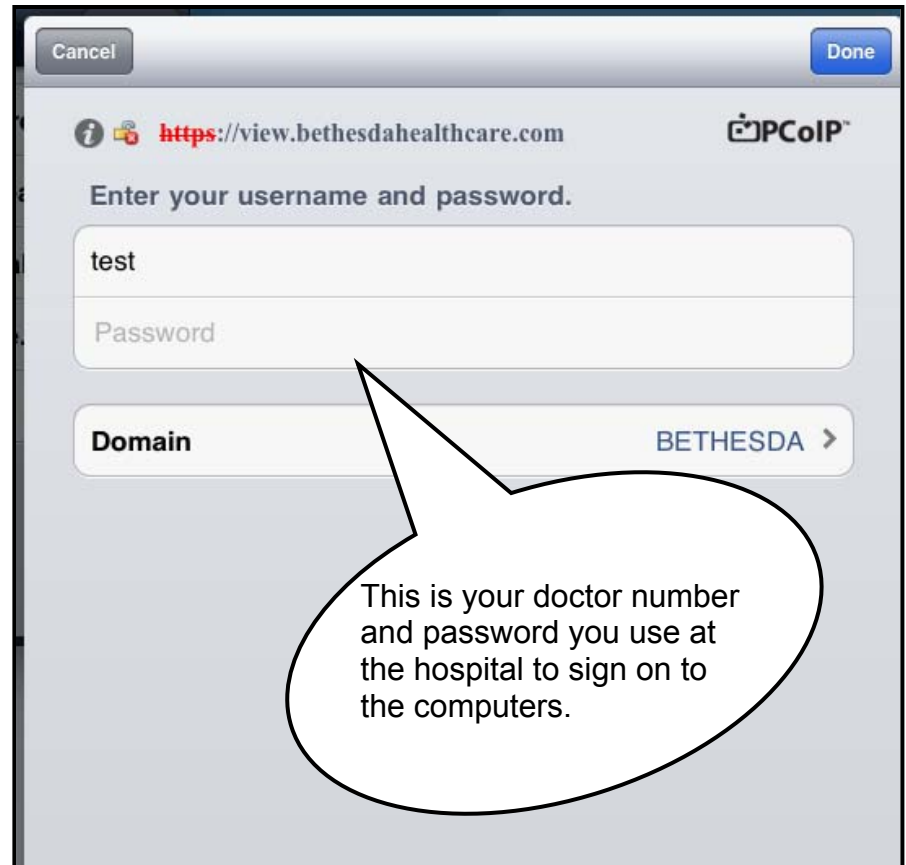
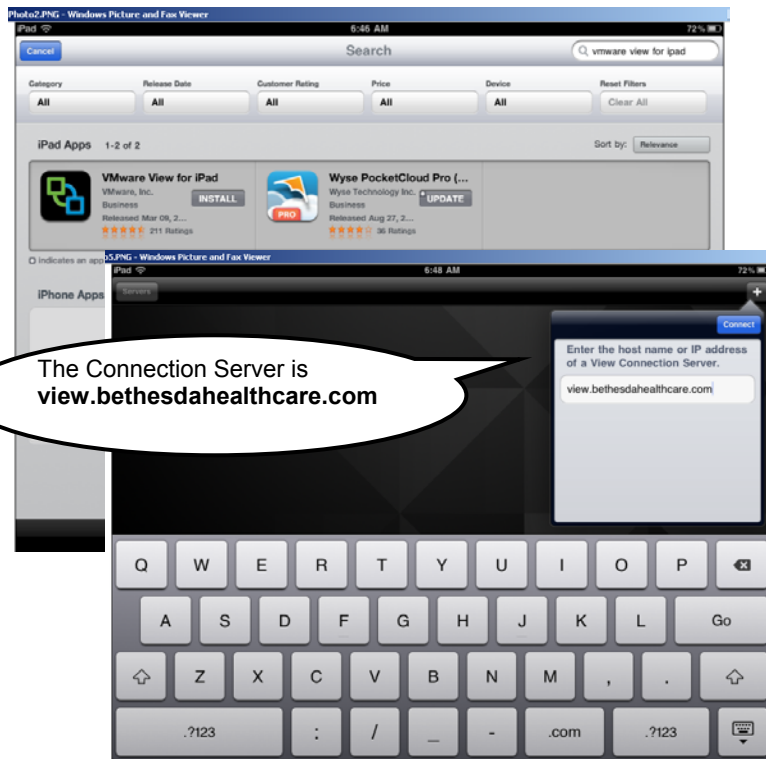
Load VMWare and Configure Device for eCOS Access

1. Download the **VMWare Viewer** Application:



When connecting to the internet with an iPad:

Use your **iPAD** to access the Apple Store and follow instructions to download the **VMWare View** app:



2. When the **VMWare Viewer** install is complete you will see a new icon on your desktop "**VMWare View Client**":

