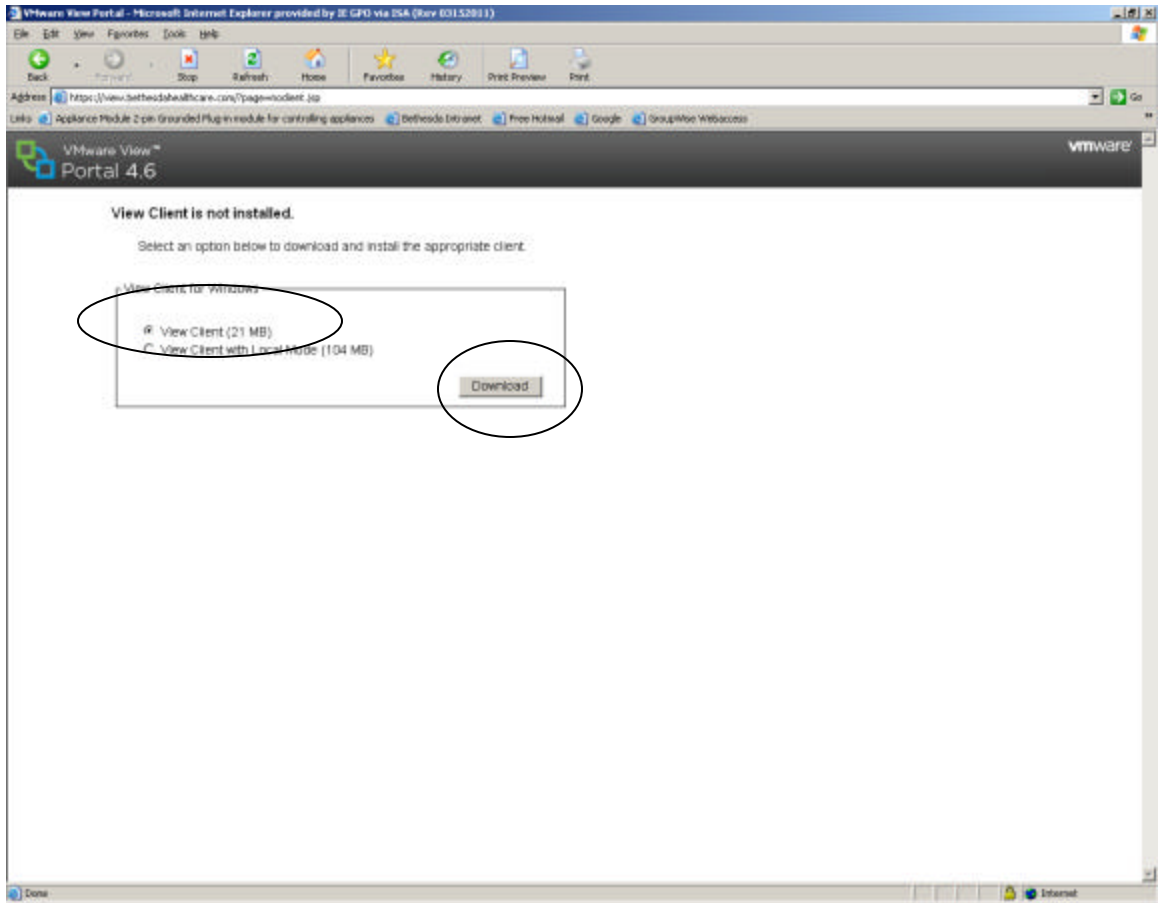


URL: view.bethesdahealthcare.com



VMware View Portal - Microsoft Internet Explorer generated by 32-bit Win 2K4 (Nov 011 5261 1)

File Edit View Favorites Tools Help

Address <https://view.bethesdahealthcare.com/?Server=VMware-viewclient.exe&page=install.jsp>

Links [Appliance Module 2 on Grounded Plug in module for controlling appliances](#) [bethesda intranet](#) [Free Huddle](#) [Google](#) [GroupWise Webconsole](#)


VMware View™ Portal 4.6

Installing View Client

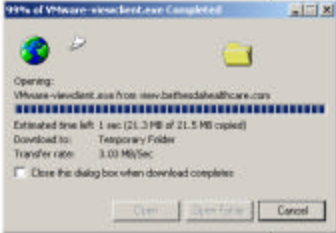

Your download should begin momentarily. If not, [click here](#).

Installation Instructions


Step 1: If an information bar appears, click on it and select "Download File".




Step 2: Click "save" to download the file to your computer.



Step 3: Double-click the file to start the installer.




Step 4: Follow the installer steps to install the View Client.




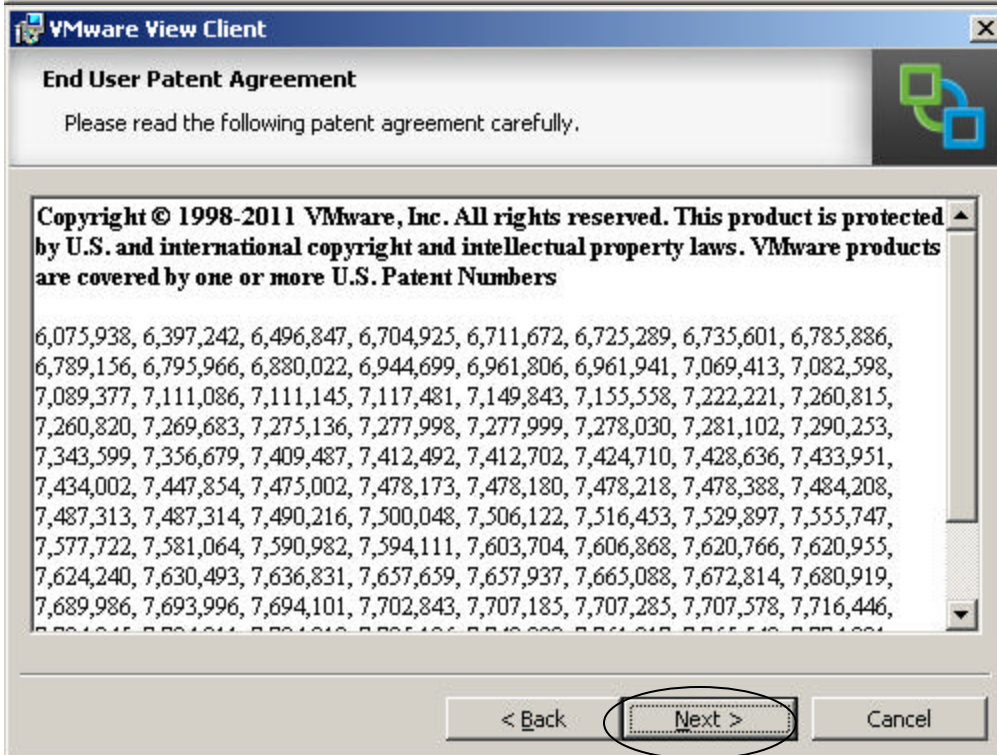
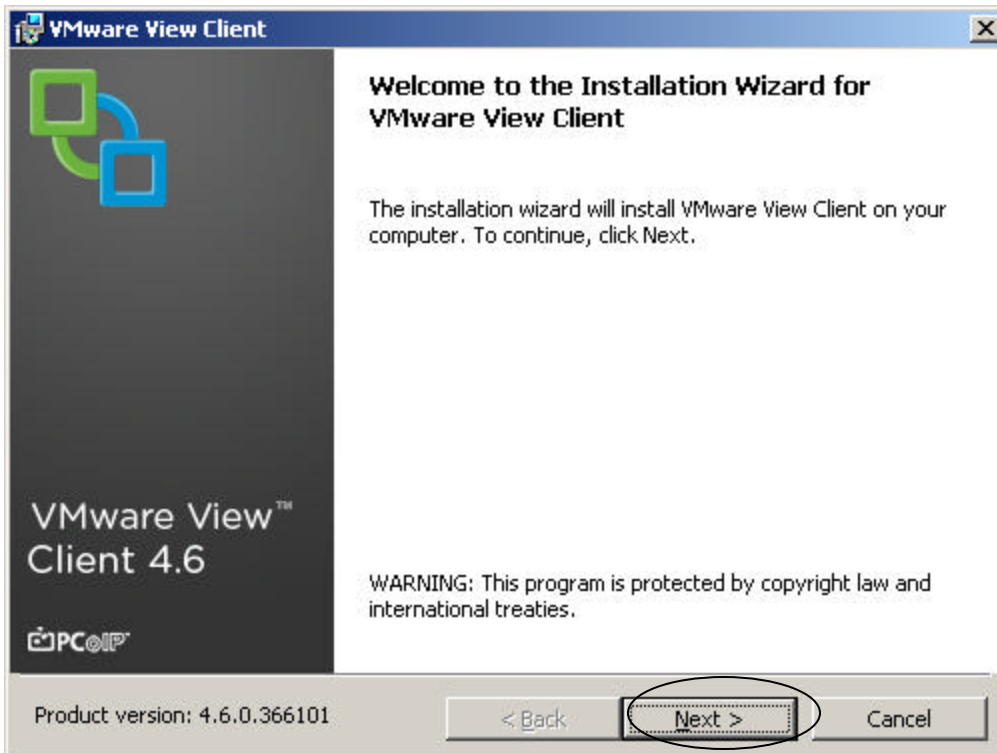
Internet Explorer - Security Warning

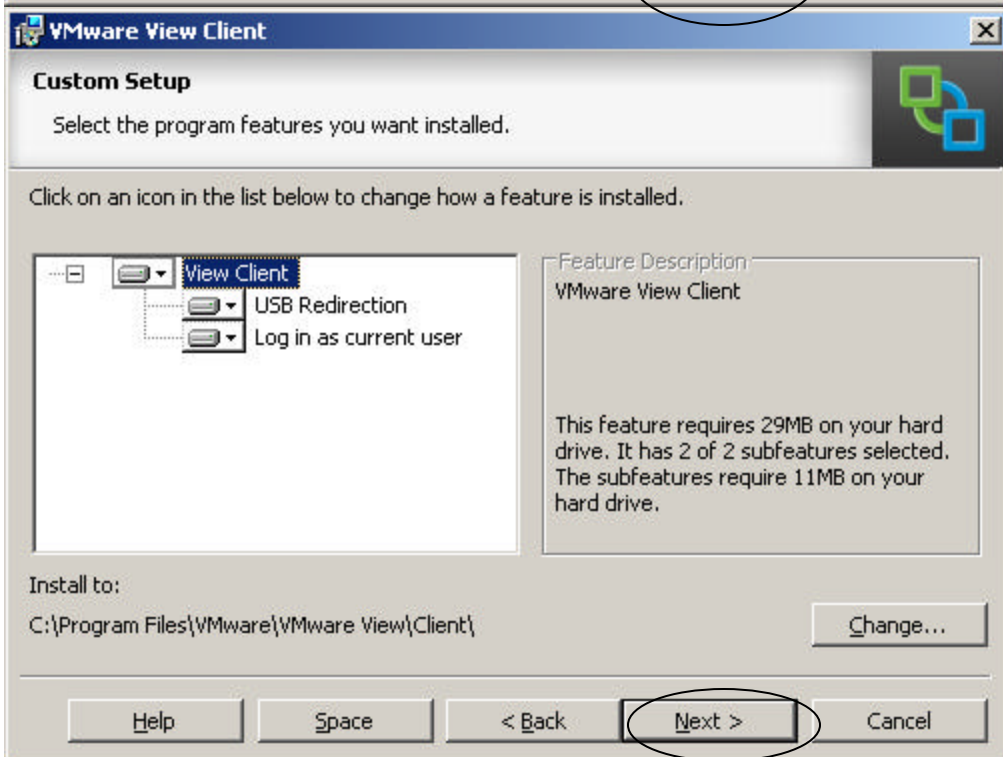
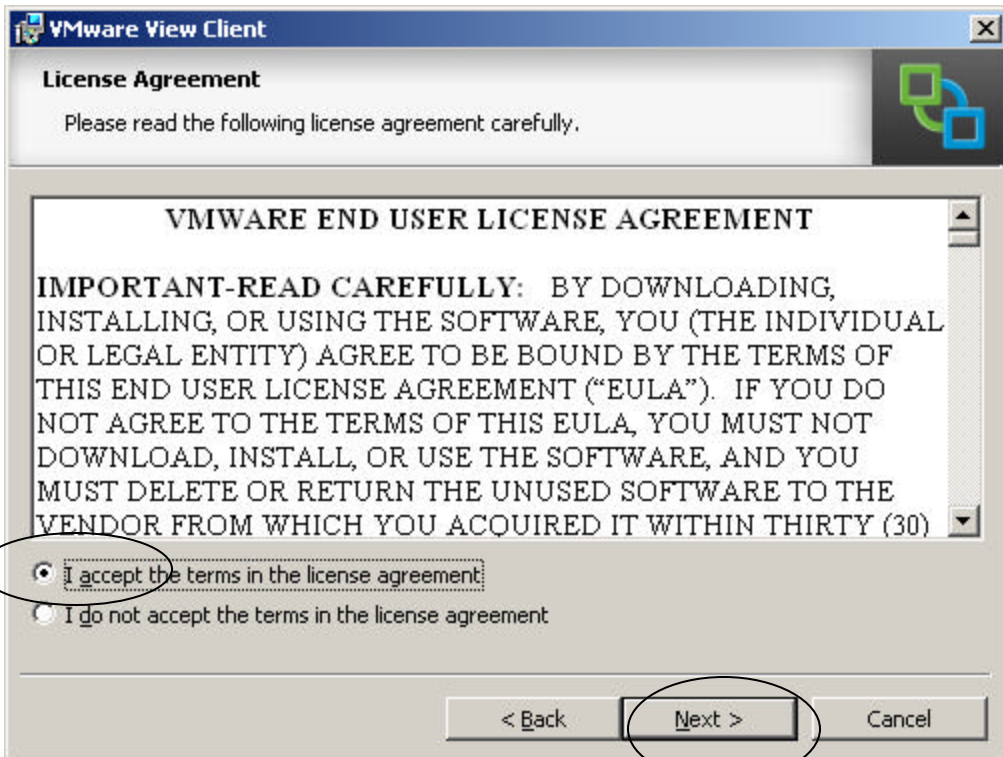
Do you want to run this software?

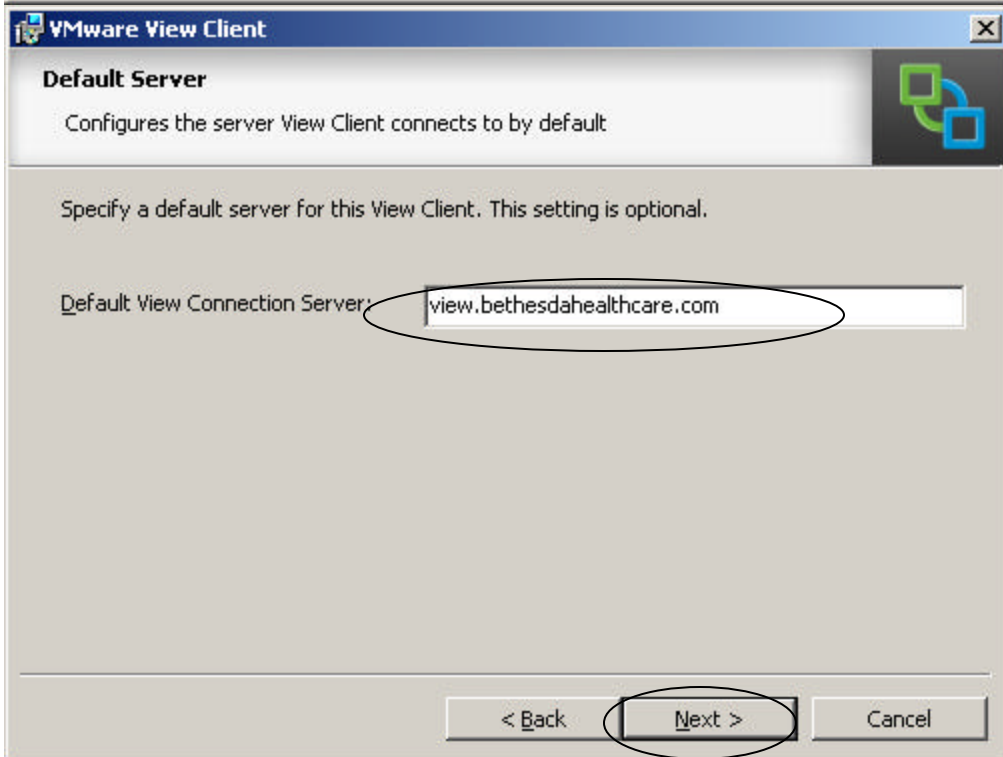
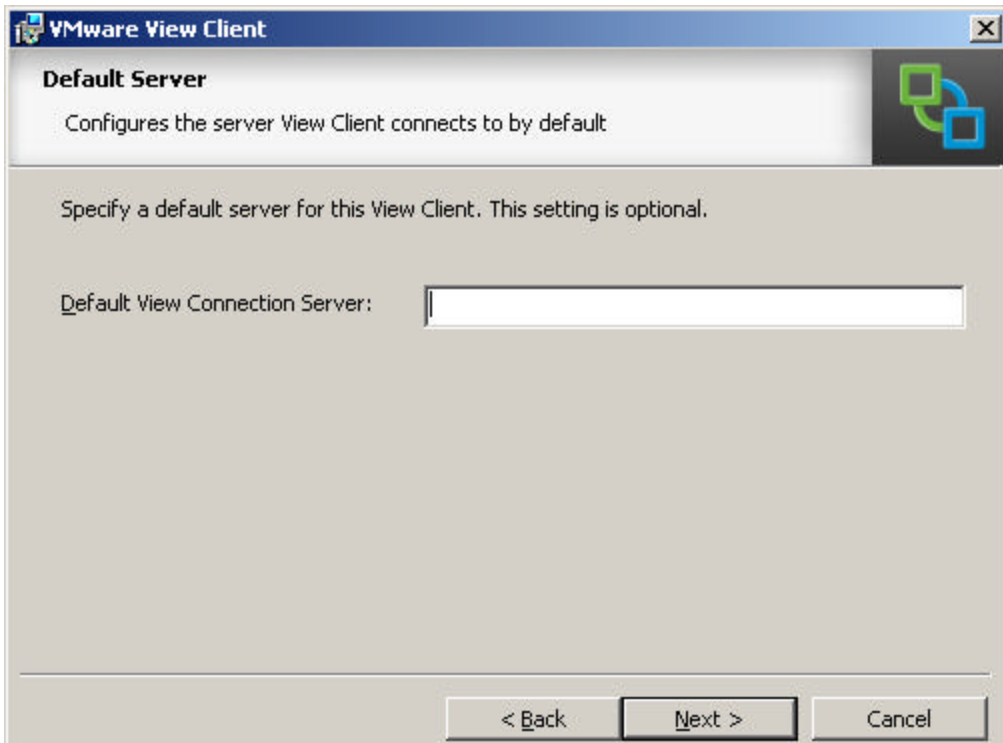
 Name: [VMware-viewclient.exe](#)
Publisher: [VMware, Inc.](#)

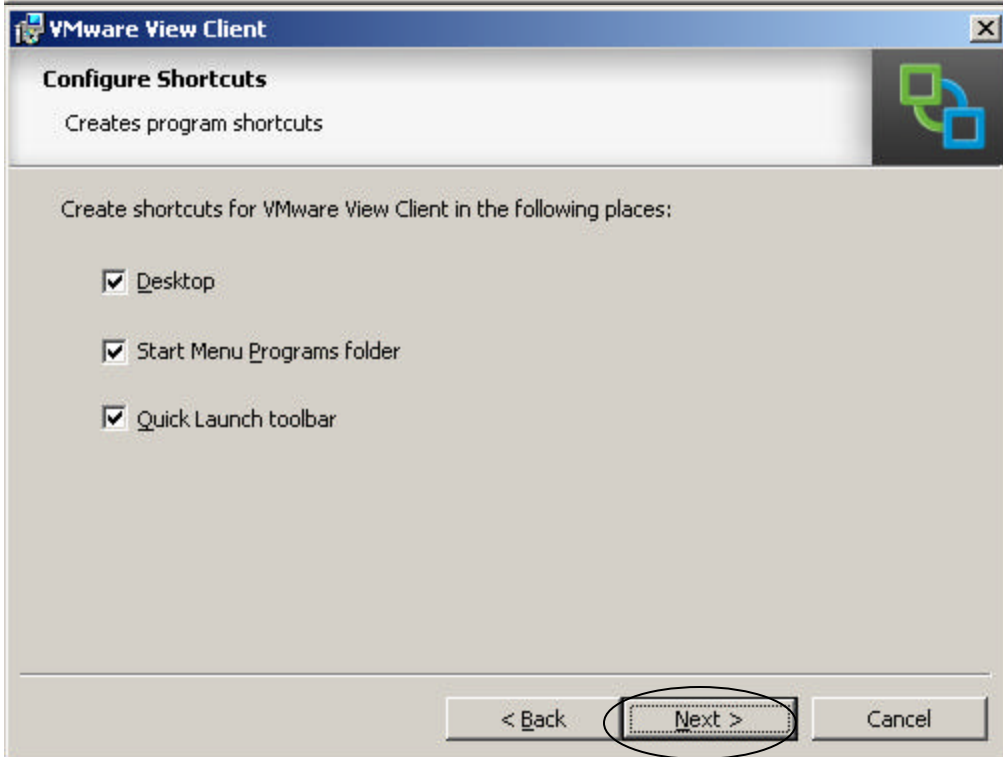
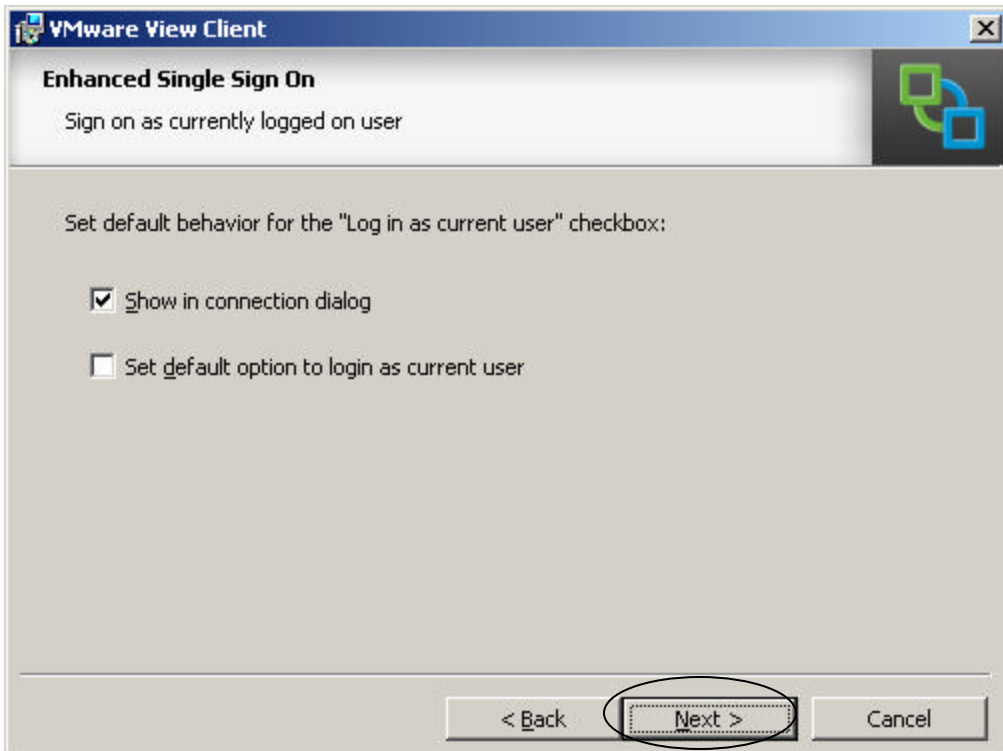
More options

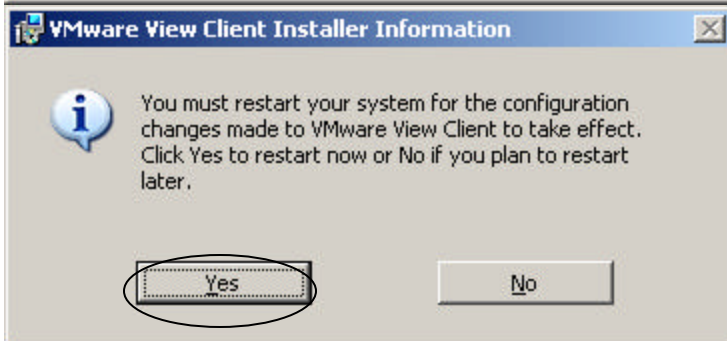
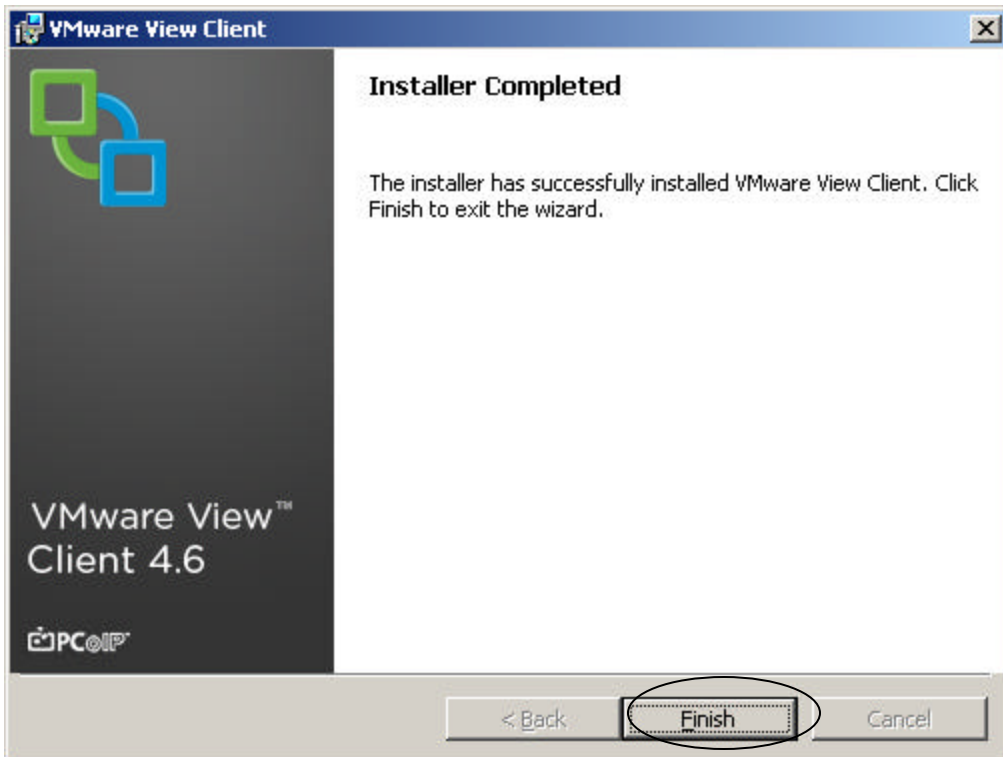
 While files from the Internet can be useful, this file type can potentially harm your computer. Only run software from publishers you trust. [What's the risk?](#)











Start VMWare View Client Connection:

